



## TECHNICAL SPECIFICATION FOR:

# 1,300KW BOILER

## OVERVIEW

- ✔ Containerised for security and protection from the elements
- ✔ Dual-fuel functionality - Swap between oil and gas midway through the hire
- ✔ Flexible connections for swift turnaround



## DESCRIPTION

Celsius Hire's 1,300KW BOILER is a dual-fuel plant room enclosed within a 20ft container enabling external siting. Complete with an internal pump set, pressurisation unit, 2 x 500L expansion vessels and associated safety valves and switches, the unit can be used for a number of application scenarios.

Complete with Celsius Hire's full supporting ancillary range of fuel tanks, gas pipework, DHW heat exchangers and cylinder's, flexible water hoses and cable, the hire system can be anything from replacing a failed boiler on a district heating system, or taking over the whole operation of a plant room during replacement works on the existing system.

## CELSIUS HIRE

Call for your rental on:

**0800 702 2161**

Visit it us at:

[www.celsiushire.com](http://www.celsiushire.com)

Email us at:

[info@celsiushire.com](mailto:info@celsiushire.com)



All data is subject to change and continuous improvement without notice. All equipment is designed to relevant mechanical and electrical directives

© Celsius Hire.

All rights reserved.

Company No: 12763272

## PERFORMANCE DATA AT DESIGN CONDITIONS

HEATING CAPACITY	KW	1,300
TEMPERATURE RANGE	°C	50 - 90

## OPERATING LIMITS

FLUID DESIGN FLOW RATE	L/S	19
MAX WORKING PRESSURE	Bar	5.5
EXPANSION VESSEL VOLUME	L	2 x 500
TOTAL FLUID VOLUME (MAX)	L	2,500
CONSUMPTION (OIL) AT FULL LOAD	L/hr	130
CONSUMPTION (GAS) AT FULL LOAD	M <sup>3</sup> /hr	135
GAS BOOSTER	Y/N	Y

## ELECTRICAL DATA

ELECTRICAL SUPPLY VOLTAGE	V	410
SUPPLY		3-Phase, Earth & Neutral
POWER CONNECTIONS	Fitted Plug	32A 3Ph 5pin BS4343
FULL LOAD RUNNING CURRENT (MAX)	A	26
MAX POWER ABSORBED	KW	12

## PHYSICAL DATA

LENGTH	mm	6096
WIDTH	mm	2439
HEIGHT	mm	2621
WEIGHT (DRY)	KG	5,800
WEIGHT (WET)	KG	8,300
FLUID COUPLING SIZE	mm	100



All data is subject to change and continuous improvement without notice. All equipment is designed to relevant mechanical and electrical directives

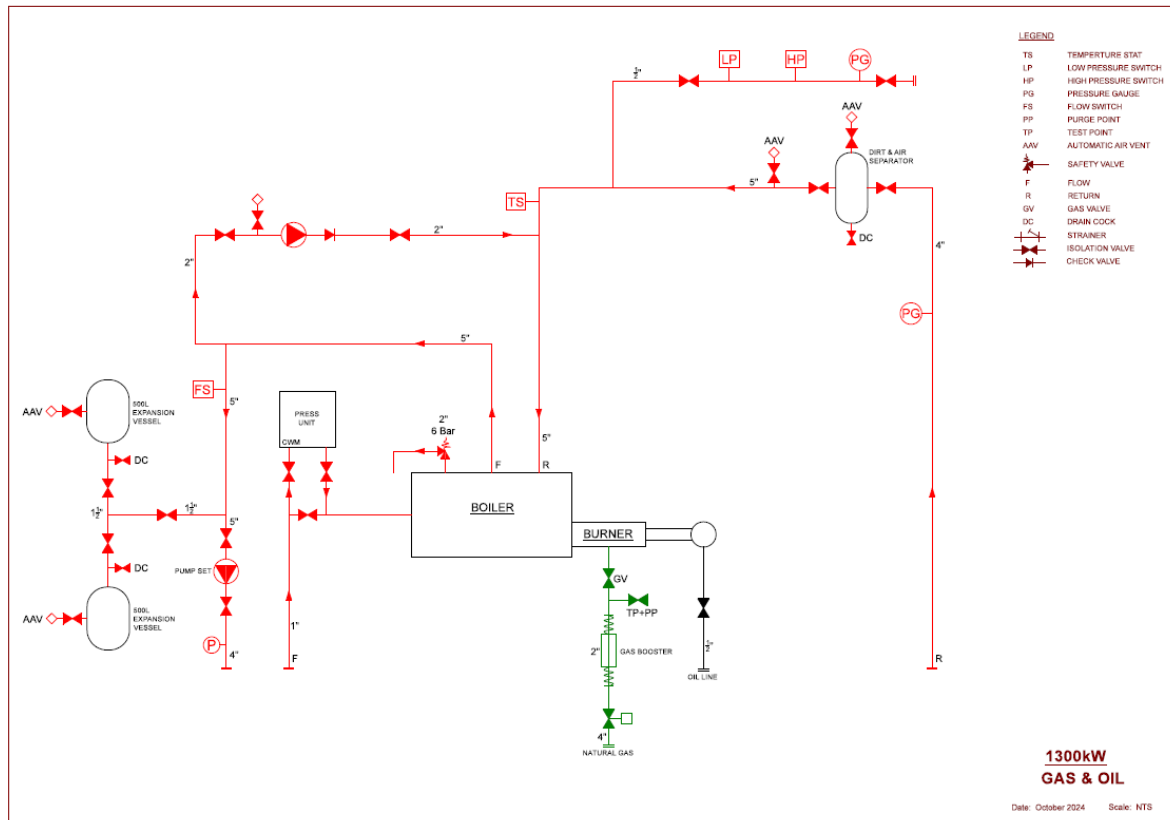
© Celsius Hire.

All rights reserved.

Company No: 12763272

## MECHANICAL SCHEMATIC

Please note Celsius Hire can offer ancillaries / components for hire outside of what is detailed on our boiler plant room drawings, below.



All data is subject to change and continuous improvement without notice. All equipment is designed to relevant mechanical and electrical directives

© Celsius Hire.

All rights reserved.

Company No: 12763272