



## TECHNICAL SPECIFICATION FOR:

# 300KW BOILER

## OVERVIEW

- ✔ Condensing boiler suitable for use on oil or gas
- ✔ Flexible connections for swift turnaround
- ✔ Only a single phase power supply required



## DESCRIPTION

Celsius Hire's 300KW BOILER is a boiler plant room enclosed within a steel frame, enabling external siting. The unit is complete with a market leading condensing boiler, suitable for use with an oil or gas burner. Complete with an internal set, associated safety valves and switches, the unit can be used for a number of applications and scenarios.

Complete with Celsius Hire's full supporting ancillary range of fuel tanks, gas pipework, DHW heat exchangers/cylinder's, flexible water hoses and cables, the hire system can be anything from replacing a failed boiler system, to taking over the whole operation of a plant room during replacement works on the existing system.

## CELSIUS HIRE

Call for your rental on:

**0800 702 2161**

Visit it us at:

[www.celsiushire.com](http://www.celsiushire.com)

Email us at:

[info@celsiushire.com](mailto:info@celsiushire.com)



All data is subject to change and continuous improvement without notice. All equipment is designed to relevant mechanical and electrical directives

© Celsius Hire.

All rights reserved.

Company No: 12763272

## PERFORMANCE DATA AT DESIGN CONDITIONS

HEATING CAPACITY	KW	300
TEMPERATURE RANGE	°C	50 - 90

## OPERATING LIMITS

FLUID DESIGN FLOW RATE	L/S	5
MAX WORKING PRESSURE	Bar	6
EXPANSION VESSEL VOLUME	L	200
CONSUMPTION (OIL) AT FULL LOAD	L/hr	32
CONSUMPTION (GAS) AT FULL LOAD	M³/hr	34

## ELECTRICAL DATA

ELECTRICAL SUPPLY VOLTAGE	V	230
SUPPLY		Single Phase
POWER CONNECTIONS	Fitted Plug	16A Single Phase 3pin Commando
FULL LOAD RUNNING CURRENT (MAX)	A	12
MAX POWER ABSORBED	KW	2

## PHYSICAL DATA

LENGTH	mm	3300
WIDTH	mm	1200
HEIGHT	mm	2300
WEIGHT (DRY)	KG	1,710
WEIGHT (WET)	KG	2,210
FLUID COUPLING SIZE	mm	50



All data is subject to change and continuous improvement without notice. All equipment is designed to relevant mechanical and electrical directives

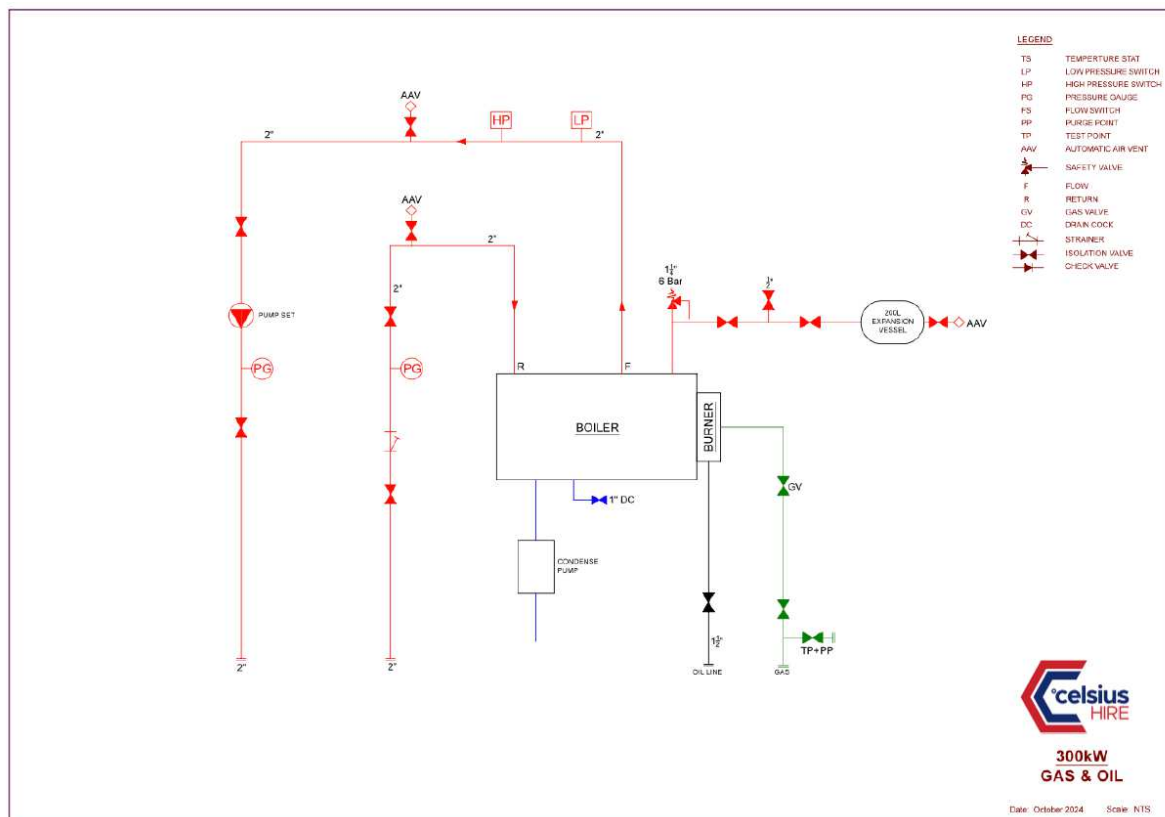
© Celsius Hire.

All rights reserved.

Company No: 12763272

## MECHANICAL SCHEMATIC

Please note Celsius Hire can offer ancillaries / components for hire outside of what is detailed on our boiler plant room drawings, below.



All data is subject to change and continuous improvement without notice. All equipment is designed to relevant mechanical and electrical directives

© Celsius Hire.

All rights reserved.

Company No: 12763272